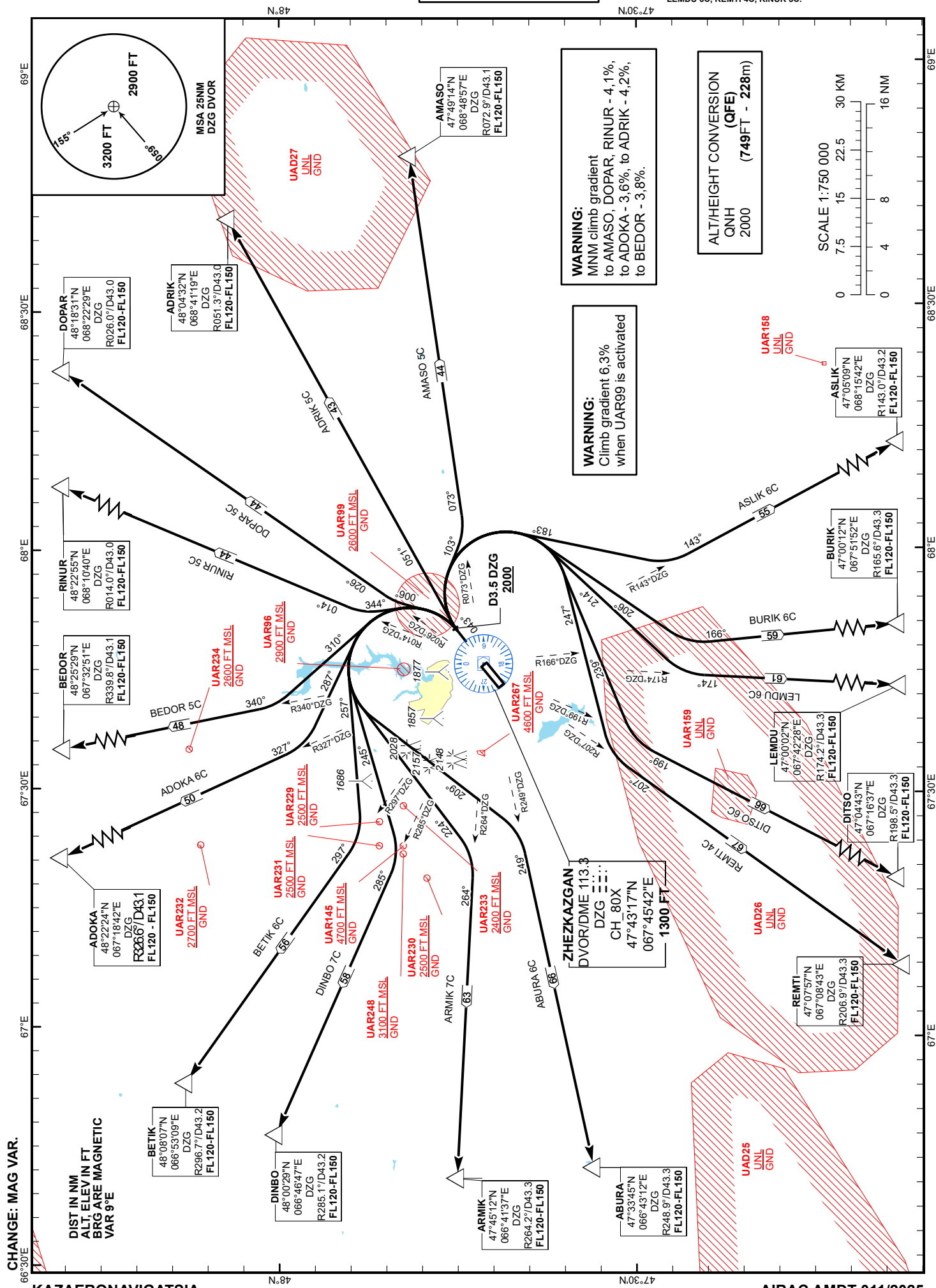


ZHEZKAZGAN TOWER 127.1  
ZHEZKAZGAN ATIS (EN) 131.4  
ZHEZKAZGAN ATIS (RU) 122.4

ABURA 6C, ADOKA 6C, ADRIK 5C.  
AMASO 5C, ARMIK 7C, ASLIK 6C.  
BEDOR 5C, BETIK 6C, BURIK 6C.  
DINBO 6C, DITSO 6C, DOPAR 5C.  
LEMDU 6C, REMTI 4C, RINUR 5C.

**ZHEZKAZGAN**  
**RWY 04**



STANDARD DEPARTURE ROUTES – INSTRUMENT (SID) ZHEZKAZGAN RWY 04

|  |  |
|--|--|
| <p><b>RINUR 5C</b><br/>After take-off climb straight ahead to 2000 or above.<br/>At 3.5NM DZG, turn LEFT on track 344° until intercept R014°DZG, then proceed on track 014° to RINUR (R014.0° D43.0NM DZG).<br/>Cross RINUR at FL120 - FL150.</p>  | <p><b>REMTI 4C</b><br/>After take-off climb straight ahead to 2000 or above.<br/>At 3.5NM DZG, turn RIGHT on track 247° until intercept R207°DZG, then proceed on track 207° to REMTI (R206.9° D43.3NM DZG).<br/>Cross REMTI at FL120 - FL150.</p> |
| <p><b>DOPAR 5C</b><br/>After take-off climb straight ahead to 2000 or above.<br/>At 3.5NM DZG, turn LEFT on track 006° until intercept R026°DZG, then proceed on track 026° to DOPAR (R026.0° D43.0NM DZG).<br/>Cross DOPAR at FL120 - FL150.</p>  | <p><b>ABURA 6C</b><br/>After take-off climb straight ahead to 2000 or above.<br/>At 3.5NM DZG, turn LEFT on track 209° until intercept R249°DZG, then proceed on track 249° to ABURA (R248.9° D43.3NM DZG).<br/>Cross ABURA at FL120 - FL150.</p>  |
| <p><b>ADRIK 5C</b><br/>After take-off climb straight ahead to 2000 or above.<br/>At 3.5NM DZG, turn RIGHT on track 051° to ADRIK (R051.3° D43.0NM DZG).<br/>Cross ADRIK at FL120 - FL150.</p>  | <p><b>ARMIK 7C</b><br/>After take-off climb straight ahead to 2000 or above.<br/>At 3.5NM DZG, turn LEFT on track 224° until intercept R264°DZG, then proceed on track 264° to ARMIK (R264.2° D43.3NM DZG).<br/>Cross ARMIK at FL120 - FL150.</p>  |
| <p><b>AMASO 5C</b><br/>After take-off climb straight ahead to 2000 or above.<br/>At 3.5NM DZG, turn RIGHT on track 103° until intercept R073°DZG, then proceed on track 073° to AMASO (R072.9° D43.1NM DZG).<br/>Cross AMASO at FL120 - FL150.</p> | <p><b>DINBO 6C</b><br/>After take-off climb straight ahead to 2000 or above.<br/>At 3.5NM DZG, turn LEFT on track 245° until intercept R285°DZG, then proceed on track 285° to DINBO (R285.1° D43.2NM DZG).<br/>Cross DINBO at FL120 - FL150.</p>  |
| <p><b>ASLIK 6C</b><br/>After take-off climb straight ahead to 2000 or above.<br/>At 3.5NM DZG, turn RIGHT on track 183° until intercept R143°DZG, then proceed on track 143° to ASLIK (R143.0° D43.2NM DZG).<br/>Cross ASLIK at FL120 - FL150.</p> | <p><b>BETIK 6C</b><br/>After take-off climb straight ahead to 2000 or above.<br/>At 3.5NM DZG, turn LEFT on track 257° until intercept R297°DZG, then proceed on track 297° to BETIK (R296.7° D43.2NM DZG).<br/>Cross BETIK at FL120 - FL150.</p>  |
| <p><b>BURIK 6C</b><br/>After take-off climb straight ahead to 2000 or above.<br/>At 3.5NM DZG, turn RIGHT on track 206° until intercept R166°DZG, then proceed on track 166° to BURIK (R165.6° D43.3NM DZG).<br/>Cross BURIK at FL120 - FL150.</p> | <p><b>ADOKA 6C</b><br/>After take-off climb straight ahead to 2000 or above.<br/>At 3.5NM DZG, turn LEFT on track 287° until intercept R327°DZG, then proceed on track 327° to ADOKA (R326.6° D43.1NM DZG).<br/>Cross ADOKA at FL120 - FL150.</p>  |
| <p><b>LEMDU 6C</b><br/>After take-off climb straight ahead to 2000 or above.<br/>At 3.5NM DZG, turn RIGHT on track 214° until intercept R174°DZG, then proceed on track 174° to LEMDU (R174.2° D43.3NM DZG).<br/>Cross LEMDU at FL120 - FL150.</p> | <p><b>BEDOR 5C</b><br/>After take-off climb straight ahead to 2000 or above.<br/>At 3.5NM DZG, turn LEFT on track 310° until intercept R340°DZG, then proceed on track 340° to BEDOR (R339.8° D43.1NM DZG).<br/>Cross BEDOR at FL120 - FL150.</p>  |
| <p><b>DITSO 6C</b><br/>After take-off climb straight ahead to 2000 or above.<br/>At 3.5NM DZG, turn RIGHT on track 239° until intercept R199°DZG, then proceed on track 199° to DITSO (R198.5° D43.3NM DZG).<br/>Cross DITSO at FL120 - FL150.</p> |  |